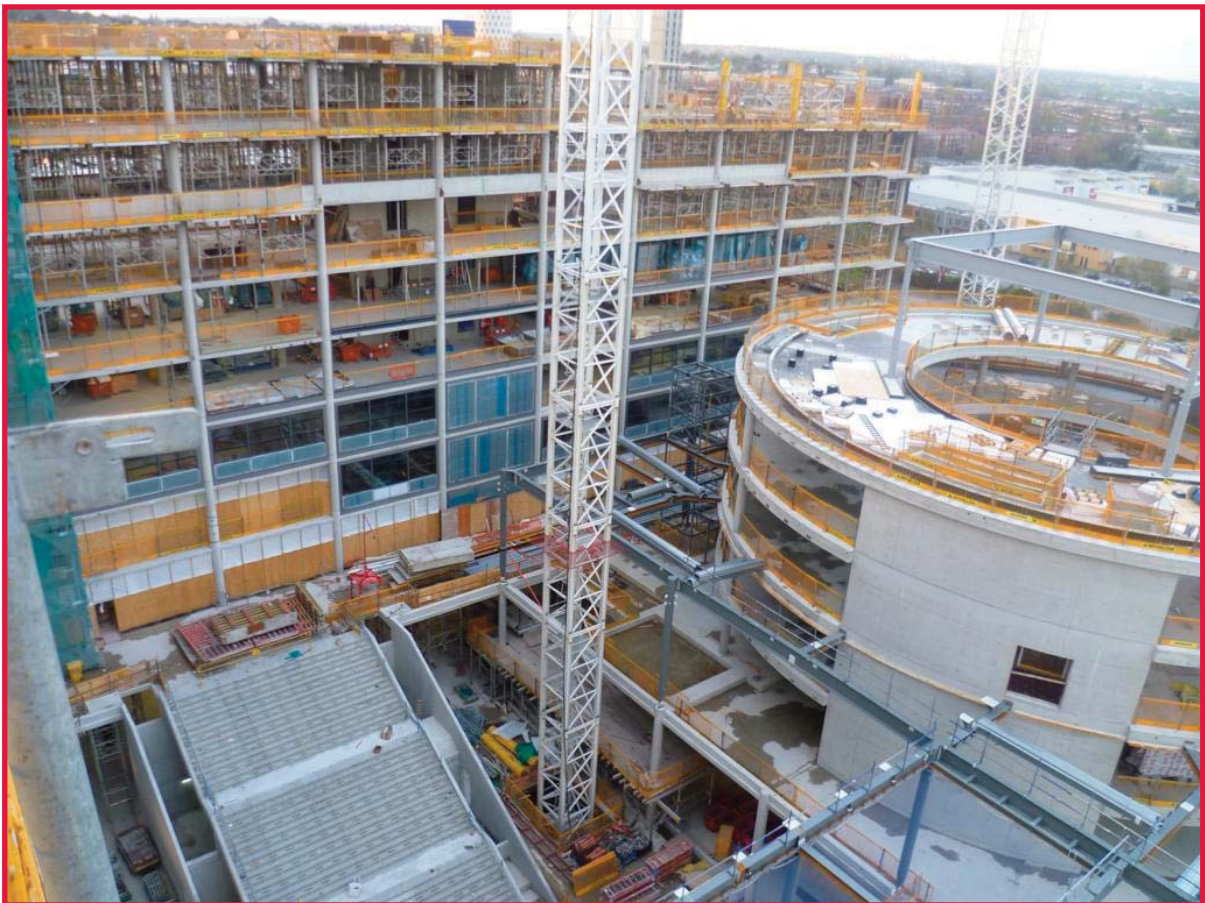


CONSTRUCT ACCIDENT STATISTICS



**STATEMENT FROM THE
HEALTH AND SAFETY MANAGER
TERRY CASBOLT**



**“ Health and Safety
is the number one
issue for CONSTRUCT
and all of its members”**

As in previous years, CONSTRUCT members have, as a result of their commitment and a proactive approach to Health and Safety, achieved a downward trend in accidents on site. This has not been by chance, but by the hard work of all CONSTRUCT members to prevent accidents and incidents on their sites.

It is with regret, that since the last CONSTRUCT accident statistics were produced, one of our members has recorded a fatal accident. Obviously our sympathy is conveyed to all those concerned. Unfortunately this is a reminder that even with our best efforts and intentions, construction is an activity where incidents can still occur unexpectedly.

With this in mind, we must ensure that the aim and objective of all CONSTRUCT members is to send all those who work on our sites home safely to their families.



HEALTH & SAFETY CHARTER

Aims & Objectives:

- Eliminate accidents and injuries on construction sites
- Advance high professional standards and excellence in the construction of in-situ RC frames and other structures
- Raise the profile of safety and health in the construction industry

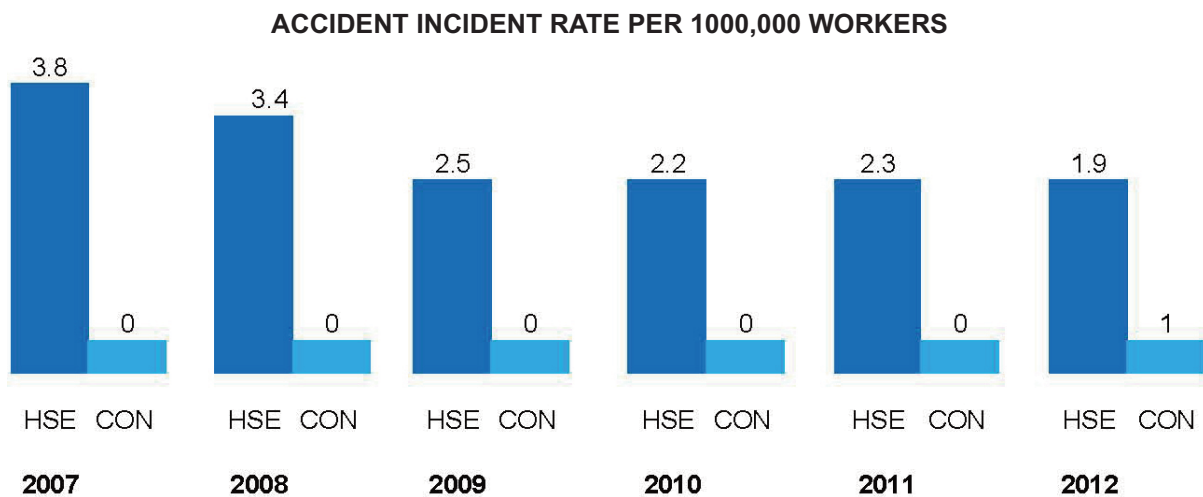
Health & Safety Commitments:

- To lead improvements in Health & Safety and welfare in construction
- To proactively work to eliminate and reduce risks associated with construction activities
- To provide a forum for the discussion of construction related health, safety, and welfare and associated environmental issues
- To report annually on Health & Safety performance
- To lead in behavioural change on all our sites to eliminate accidents and work related ill health
- To achieve a fully qualified and competent workforce
- To improve the quality and competency of frontline supervision
- Promote the benefits of workplace health and safety
- Exchange best practice and lessons learnt
- Take collective action to drive industry improvements and the management of construction risks

FATAL REPORTABLE INJURIES (2007 - 2012)

- 1) Figures are based on replies from CONSTRUCT Member Companies
- 2) Calculations of figures are based on HSE calculation (100,000 workers ÷ number of operatives x number of fatal reported accidents)

	CONSTRUCT	HSE
2007	$100,000 \div 15,615 = 6.40 \times 0 = 0$	(3.8)
2008	$100,000 \div 13,936 = 7.17 \times 0 = 0$	(3.4)
2009	$100,000 \div 11,422 = 8.75 \times 0 = 0$	(2.5)
2010	$100,000 \div 11,386 = 8.78 \times 0 = 0$	(2.2)
2011	$100,000 \div 11,012 = 9.08 \times 0 = 0$	(2.3)
2012	$100,000 \div 9,075 = 11.02 \times 1 = 11.02$	(1.9)





3/7-DAY REPORTABLE INJURIES (2007 - 2012)

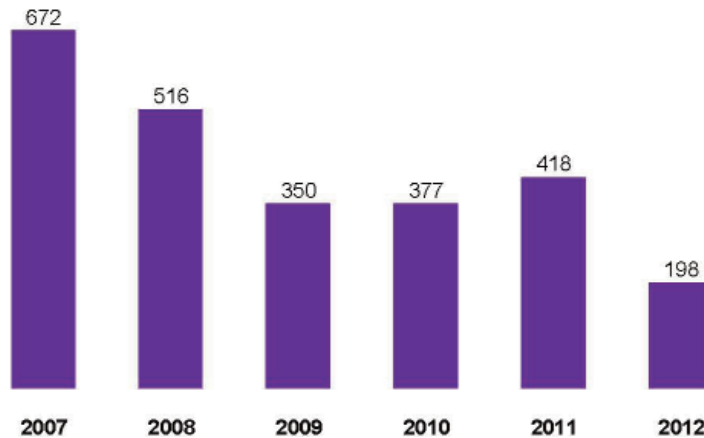
- 1) Figures are based on replies from CONSTRUCT Member Companies
- 2) Calculations of figures are based (100,000 employees ÷ number of operatives x number of 3/7-day reportable accidents)

The accident incident rate (AIR) for CONSTRUCT Members in 2007 was 672, and in 2012 this was 198 which represented a drop of 70% over the last 5 years.

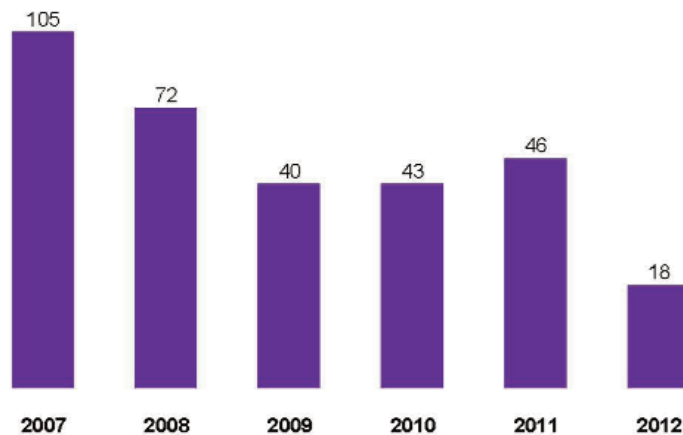
CONSTRUCT

2007	$100,000 \div 15,615 = 6.40 \times 105 = 672$
2008	$100,000 \div 13,936 = 7.17 \times 72 = 516$
2009	$100,000 \div 11,422 = 8.75 \times 40 = 350$
2010	$100,000 \div 11,386 = 8.78 \times 43 = 377$
2011	$100,000 \div 11,012 = 9.08 \times 46 = 418$
2012	$100,000 \div 9,075 = 11.02 \times 18 = 198$

ACCIDENT INCIDENT RATE PER 100,000 WORKERS

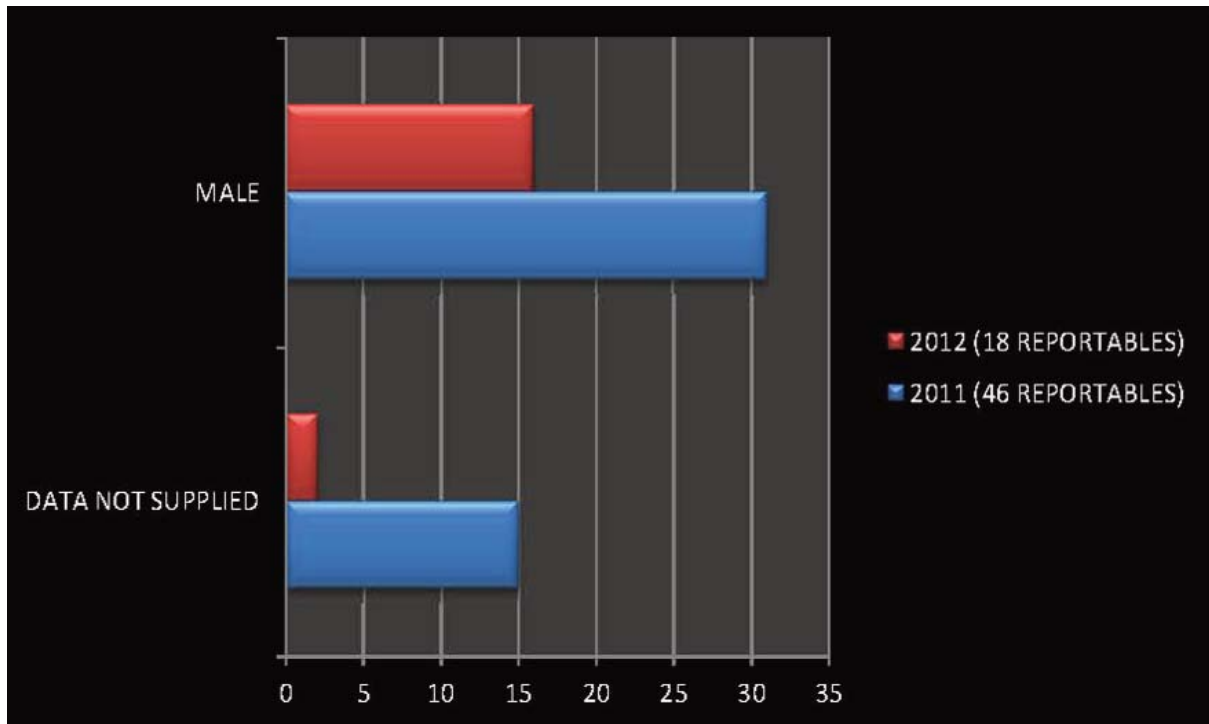


3/7-DAY REPORTABLE INJURIES FOR CONSTRUCT MEMBERS

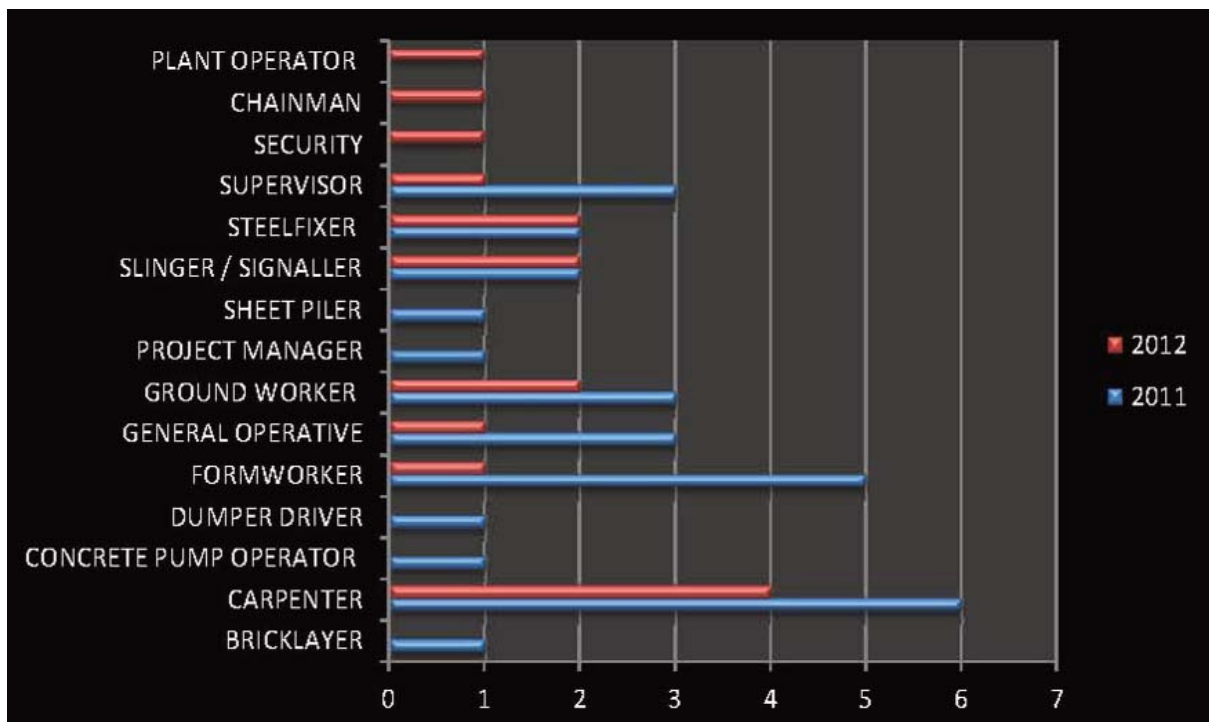


CONSTRUCT MEMBERS' 3/7-DAY REPORTABLE INJURIES 2011 - 2012

GENDER

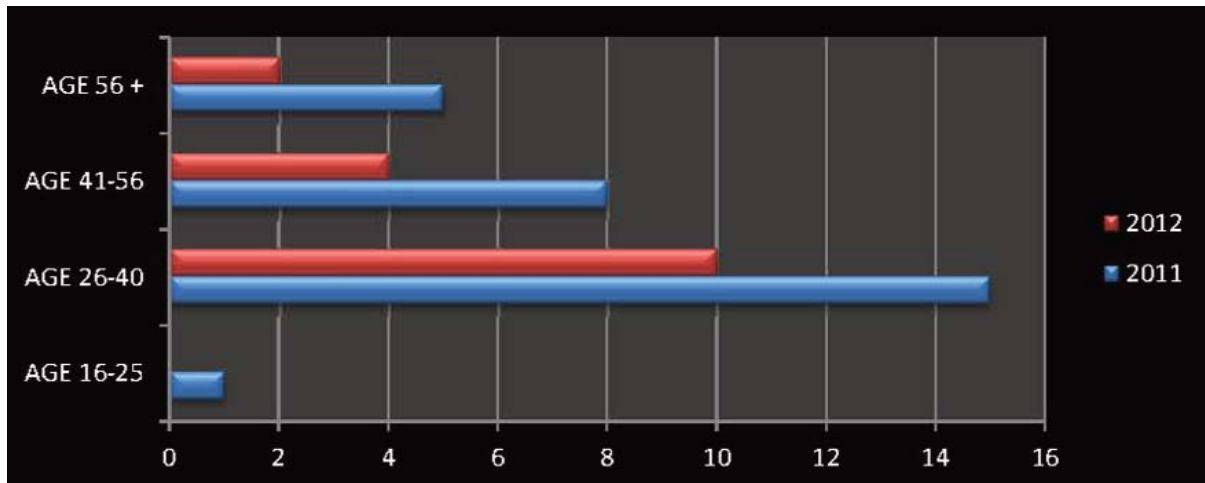


TRADE

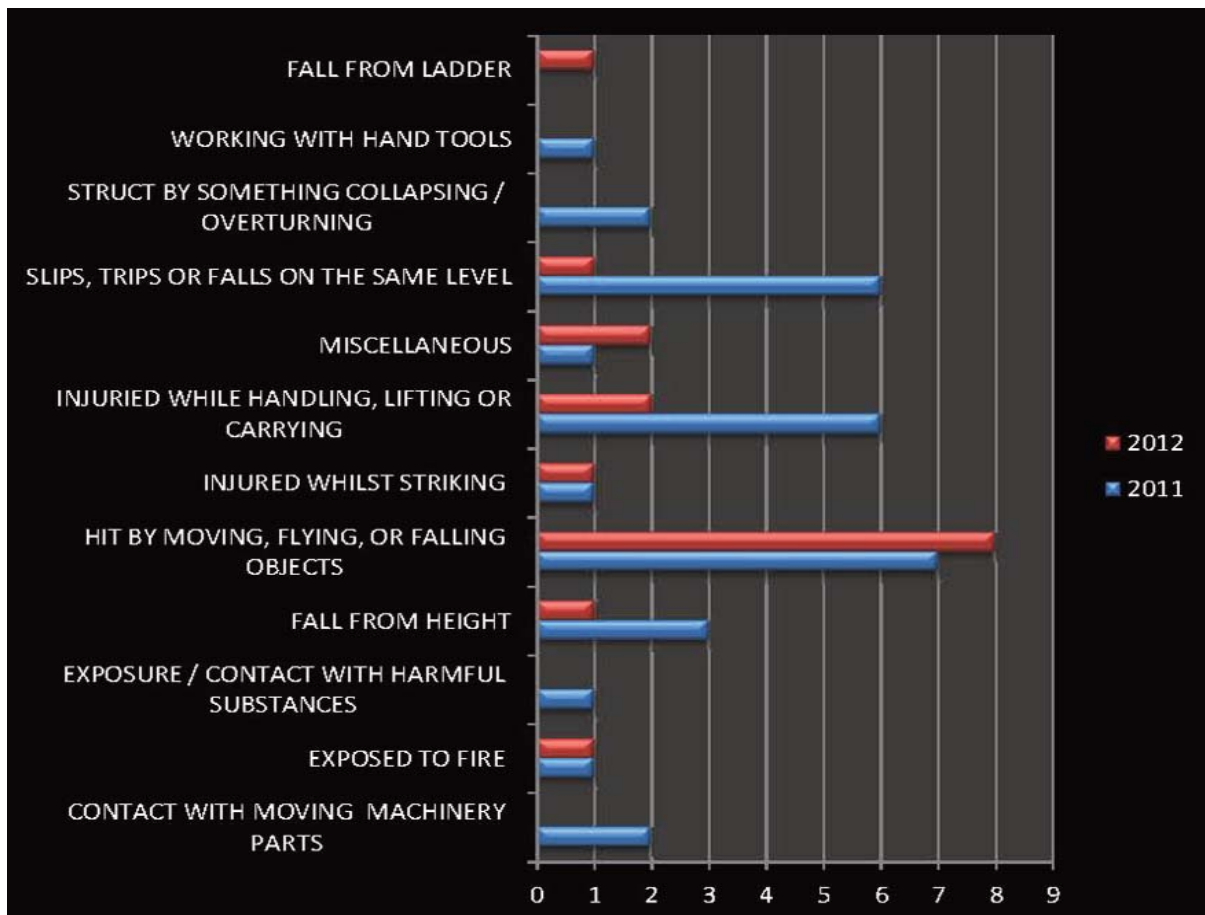


CONSTRUCT MEMBERS' 3-7-DAY REPORTABLE INJURIES 2011 - 2012

AGE

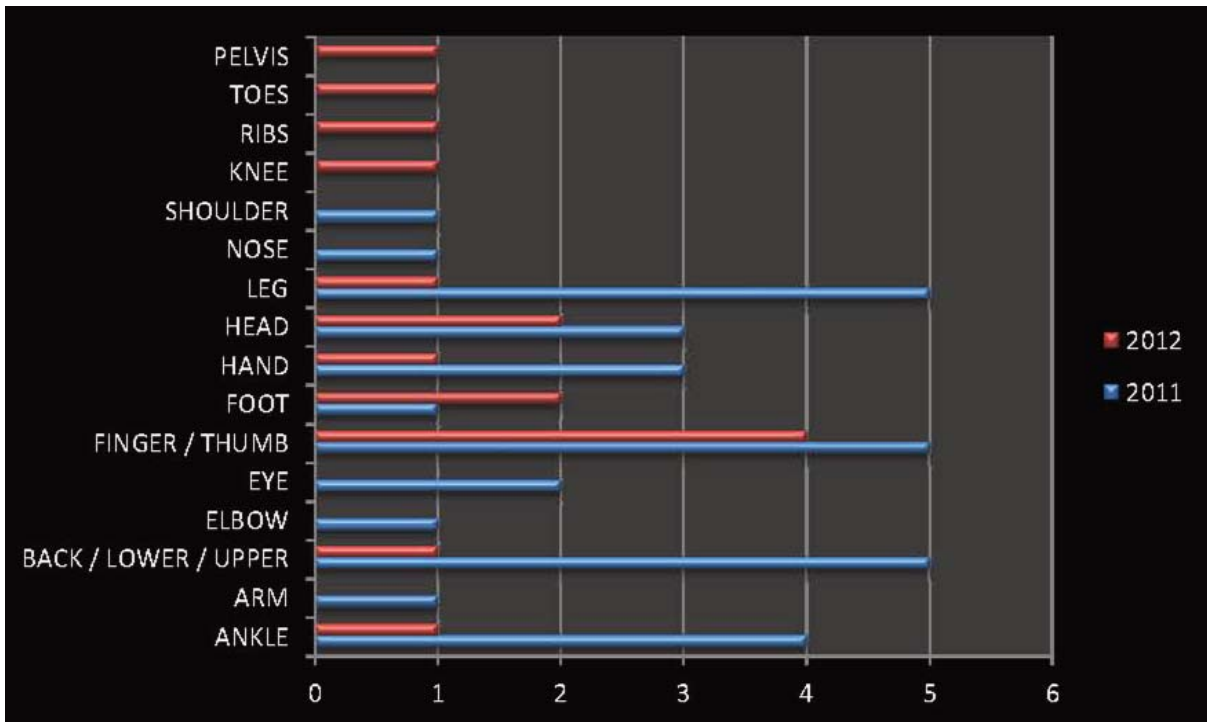


CATEGORY OF INCIDENT

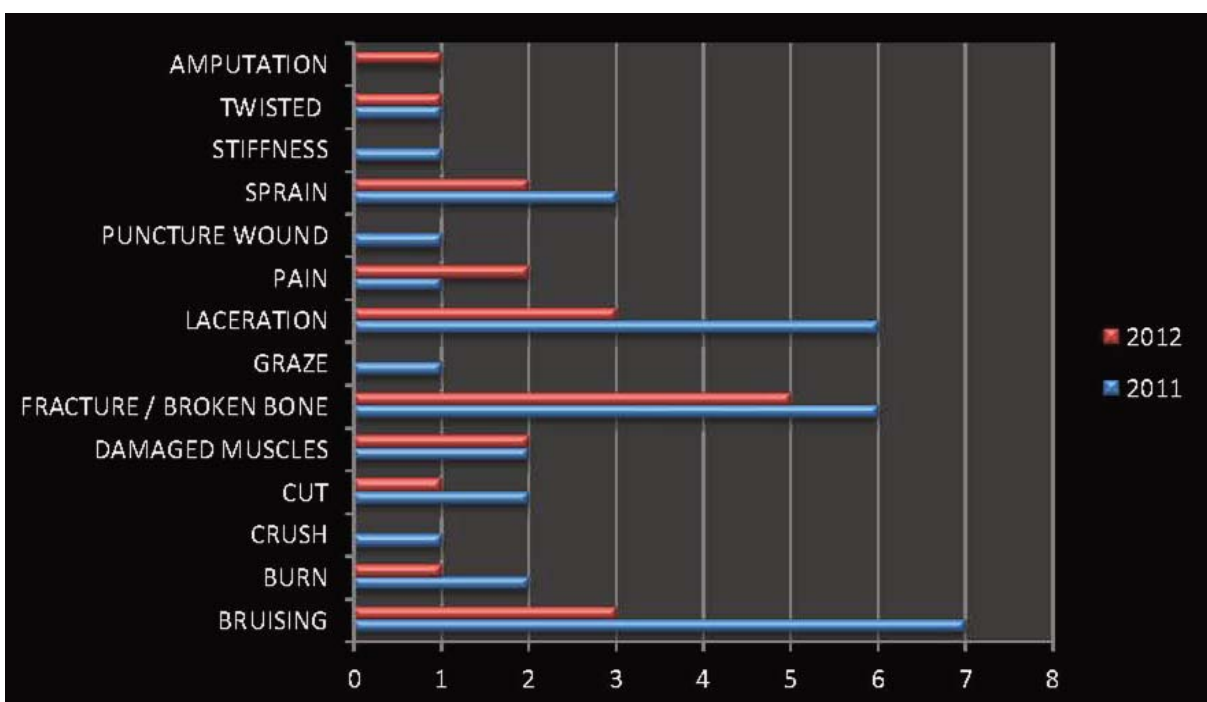


CONSTRUCT MEMBERS' 3/7 DAY REPORTABLE INJURIES 2011 - 2012

PART OF BODY



TYPE OF INJURY



MAJOR REPORTABLE INJURIES (2007 - 2012)

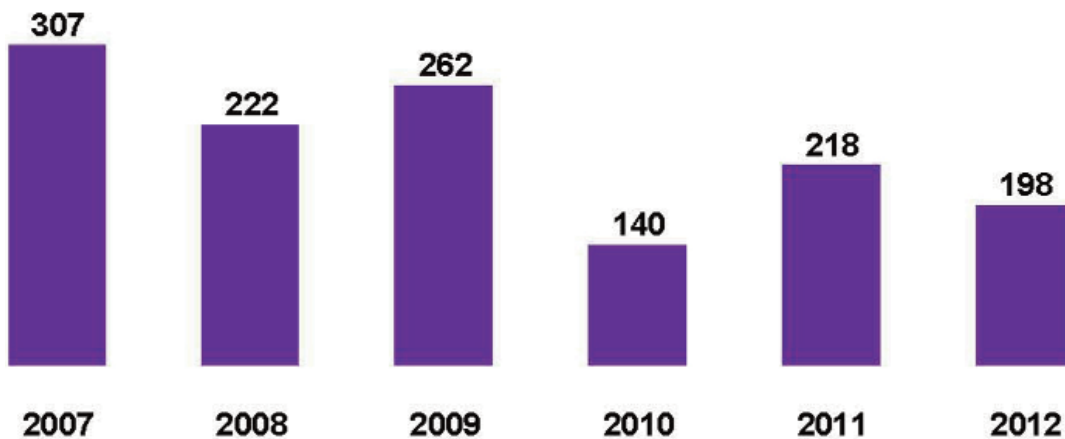
- 1) Figures are based on replies from CONSTRUCT Member Companies
- 2) Calculations of figures are based (100,000 employees ÷ number of operatives x number of major reportable accidents)

The accident incident rate (AIR) for CONSTRUCT Members in 2007 was 307, and in 2012 this was 198 which represented a drop of 35% over the last 5 years.

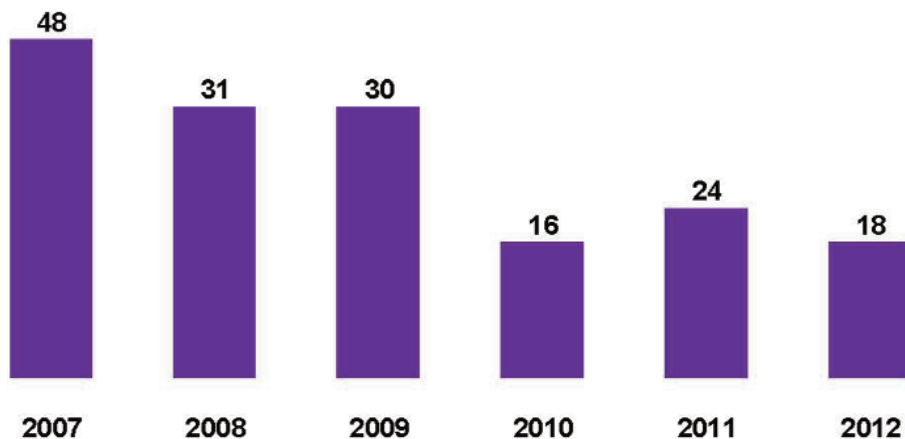
CONSTRUCT

2007	$100,000 \div 15,615 = 6.40 \times 48 = 307$
2008	$100,000 \div 13,936 = 7.17 \times 31 = 222$
2009	$100,000 \div 11,422 = 8.75 \times 30 = 262$
2010	$100,000 \div 11,386 = 8.75 \times 16 = 140$
2011	$100,000 \div 11,012 = 9.08 \times 24 = 218$
2012	$100,000 \div 9,075 = 11.02 \times 18 = 198$

ACCIDENT INCIDENT RATE PER 100,000 WORKERS

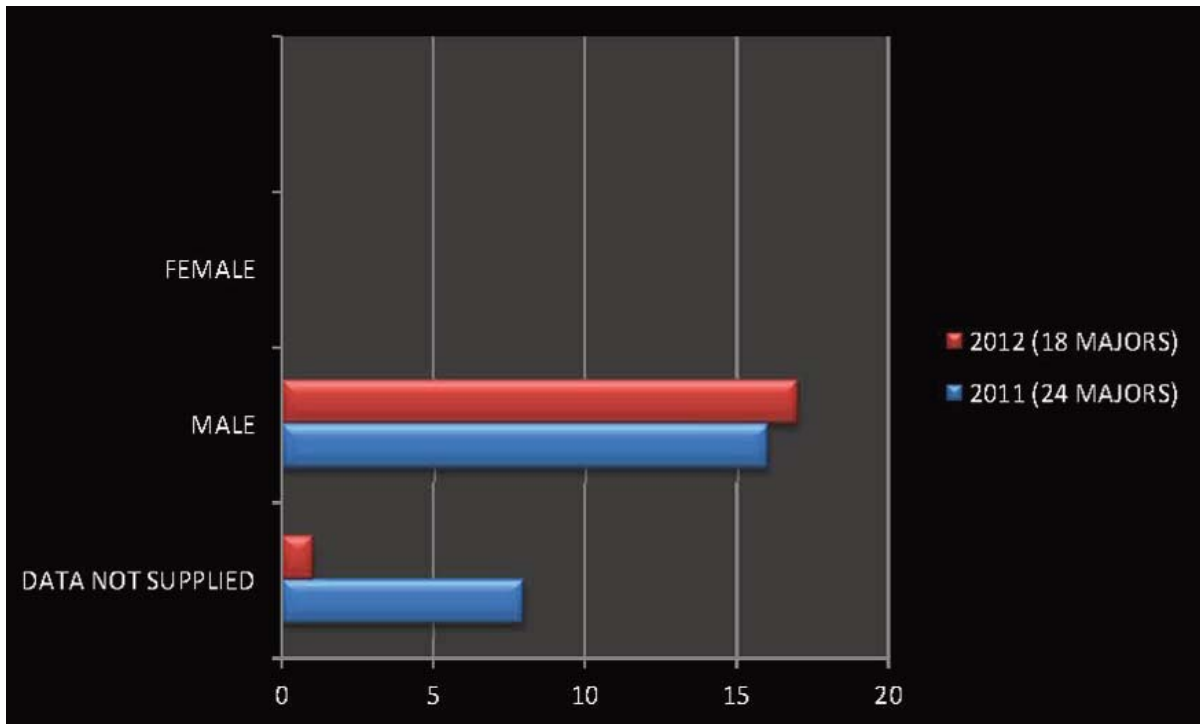


NO OF MAJOR REPORTABLE INJURIES FOR CONSTRUCT MEMBERS

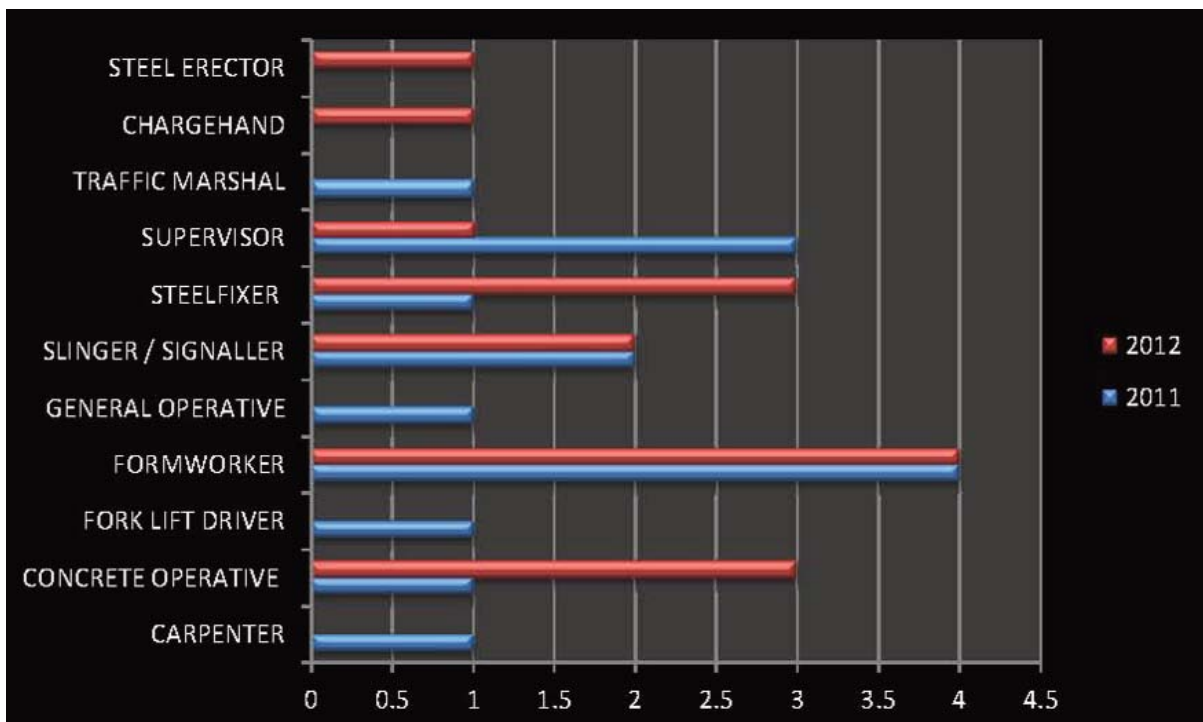


CONSTRUCT MEMBERS' MAJOR REPORTABLE INJURIES 2011 - 2012

GENDER

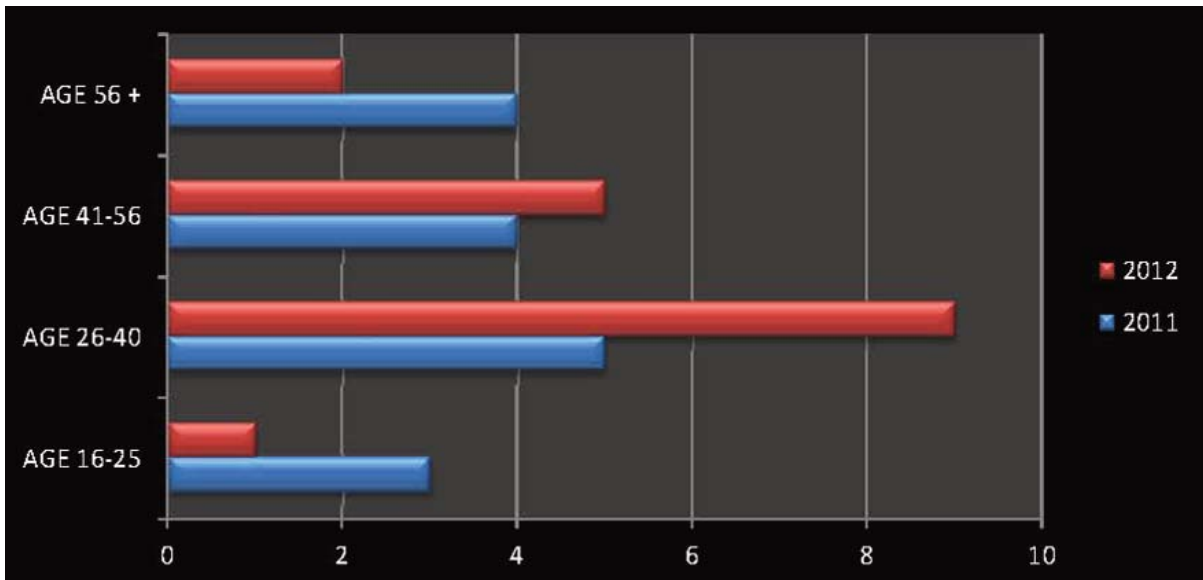


TRADE

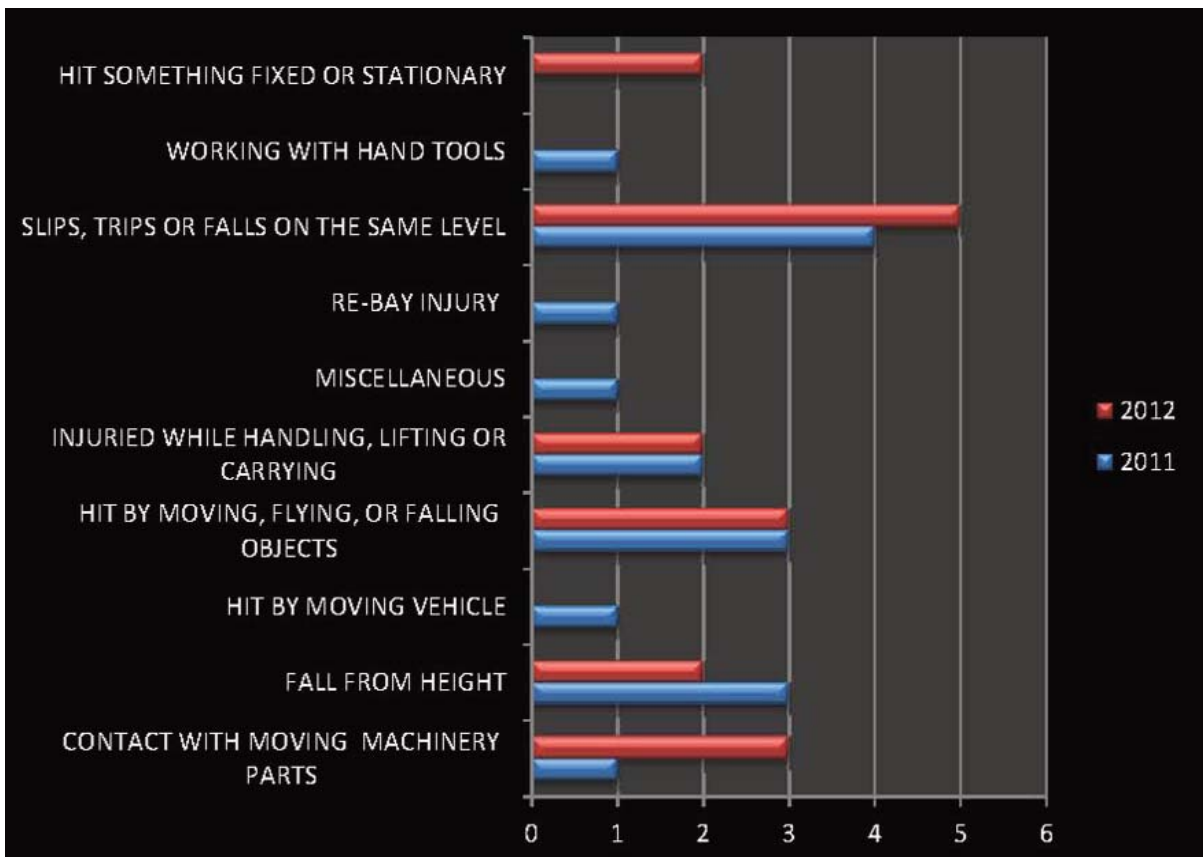


CONSTRUCT MEMBERS' MAJOR REPORTABLE INJURIES 2011 - 2012

AGE

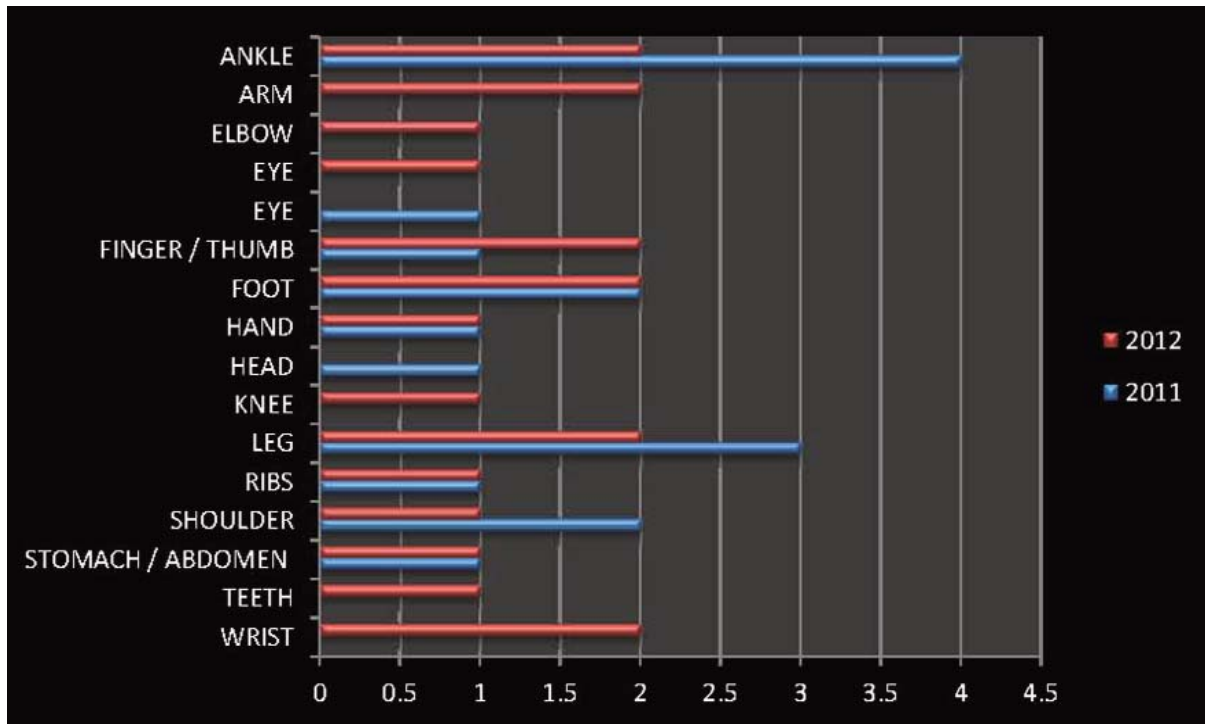


CATEGORY OF INCIDENT

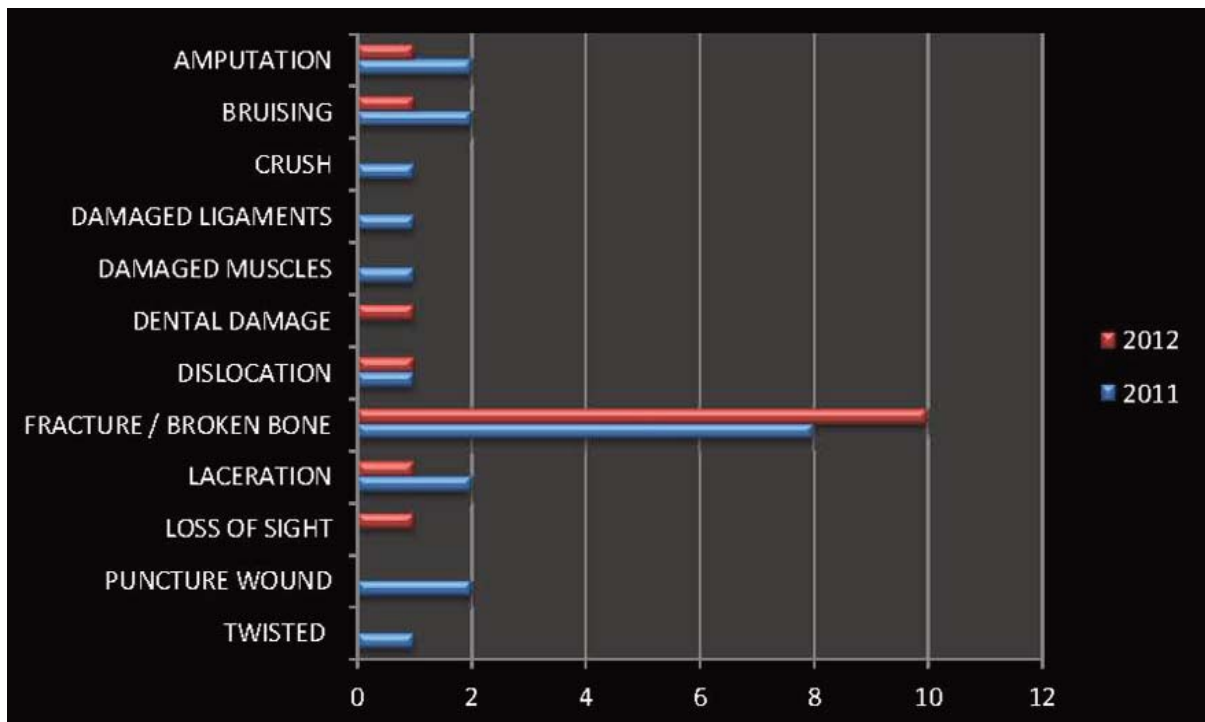


CONSTRUCT MEMBERS' MAJOR REPORTABLE INJURIES 2011 - 2012

PART OF BODY



TYPE OF INJURY





RELEVANT PUBLICATIONS

1. A Guide to the Safe Transportation of Formwork and Falsework Equipment

This publication is intended to provide a source of practical guidance and reference to assist management in the storage and handling of formwork or falsework products.

2. A Guide to the Safe Use of Formwork and Falsework

This guide, which is useful for client through to formwork contractor, is not a practical 'how to' document, but a best practice management guide.

3. Lifting Plan DVD

This Template Plan will assist members in producing compliant, fully considered Lifting Plans.

4. Working at Height DVD - Safe Erection and Dismantling of Soffit Support Systems

This DVD is designed for use by site supervisors. It can be used to complement toolbox talks. Its primary objective is to raise safety awareness in the erection and taking down of formwork systems.

5. Environmental Plan Template DVD

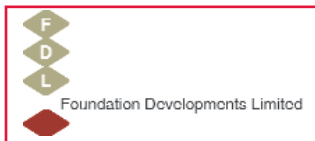
These templates will assist members in producing compliant, considered Environmental Plans.

6. CONSTRUCT: Your OWN Safety DVD

A series of six interactive videos about behavioural safety. These videos cover PPE, Accidents and Incidents, Pumping Concrete, Managing Work at Heights, COSHH and the Use of Vibrating Equipment.

CONSTRUCT CONTRACTORS

A special thank you to all CONSTRUCT's Contractor Members who contributed to the CONSTRUCT Accident Statistics



November 2013

Riverside House • 4 Meadows Business Park • Station Approach
Blackwater • Camberley • Surrey GU17 9AB
Tel: 01276 38444 • Fax: 01276 600242
E-mail: enquiries@construct.org.uk • Website: www.construct.org.uk